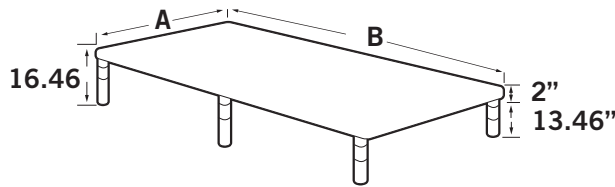


BAS-X 300

ASSEMBLED BASE ASSEMBLED DIMENSIONS AND WEIGHT



SIZE	A	B	WEIGHT
T80	78.8	37.4	85 lbs.
F74	74.9	53.1	99 lbs.
Q80	78.8	58.3	104 lbs.
King	78.8	74.8	143 lbs.
CK	82.8	70.9	145 lbs.
SCK	82.8	35.4	88 lbs.

Dimensions : $\pm .25$ Unit : Inches

NOTE:
All weight values ± 5 lb. (2.27 kg.)

MAX WEIGHT

SCK / T80 = 525 lbs

F74 / Q80 / K / CK = 850 lbs

evenly distributed across base

(includes mattress and all occupants)

ELECTRICAL SPECIFICATION AND CERTIFICATIONS

MAXIMUM DAILY USAGE

Duty Cycle: 10%.

2 min. / 18 min.

PACEMAKER WARNING

This product may produce a vibrating sensation. It is possible that individuals with heart assist pacemakers may experience a sensation similar to exercise. Consult physician for complete information.

REMOTE CONTROL

Wireless, Bluetooth low energy

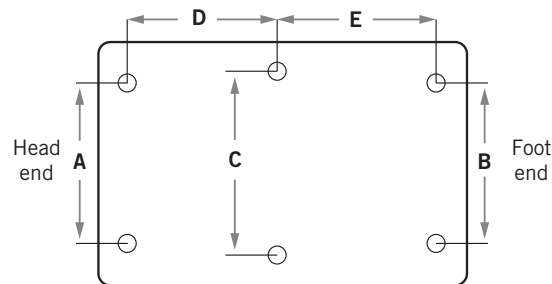
Radio Frequency: 2.4GHz

CONTROL BOX

Electrical Rating: 24V-30V DC

Duty Cycle: 10%. Max. 2 min. / 18 min.

CE and ETL (Canada & US) certified.



SIZE	A	B	C	D	E
T80	25.6	23.3	27.6	31.6	31.7
F74	36.4	34.0	38.4	29.6	29.7
Q80	36.4	34.0	38.4	31.6	31.7
King	57.3	54.9	59.3	32.1	31.6
CK	57.3	54.9	59.3	34.1	31.6
SCK	25.6	23.3	27.6	33.0	33.9

Dimensions : $\pm .25$ Unit : Inches

POWER SUPPLY

Electrical Rating: Input-100 - 240V AC, 50/60 HZ, Output - 29V DC, 2A.

Class 2 power supply.

UL listed (Canada & US).

ACTUATOR(LIFT MOTOR)

Electrical Rating: 24V DC , 3A

Duty Cycle: 10%. Max. 2 min. / 18 min.

ETL (Canada & US) certified.

MASSAGE

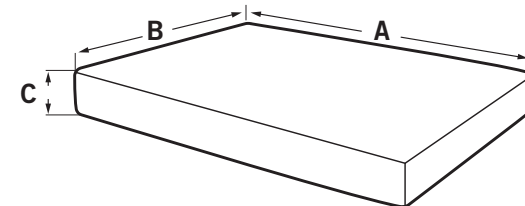
Electrical Rating: DC 24V ' 0.2A

ETL (Canada & US) certified.

Specifications

For warranty/support information,
call toll free: 800-888-3078

PACKAGING / SHIPPING PACKAGED DIMENSIONS AND WEIGHT



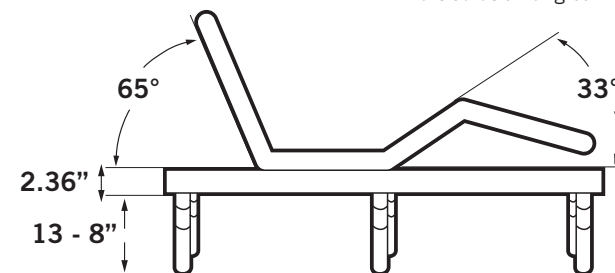
SIZE	A	B	C	WEIGHT	VOLUME
T80	39.0	41.5	5.2	89 lbs.	4.88 ft.
F74	54.7	39.6	5.2	103 lbs.	6.52 ft.
Q80	59.9	41.5	5.2	108 lbs.	7.48 ft.
King	76.4	41.5	6	148 lbs.	11.01 ft.
CK	72.5	43.5	6	150 lbs.	10.95 ft.
SCK	37.0	43.5	5.2	91 lbs.	4.84 ft.

Dimensions : $\pm .25$

Unit : Inches

NOTE:
All packaged weight values ± 5 lb. (2.27 kg.)

NOTE:
All articulation angles ± 3 degrees.



*Minimal leg height requirement = 0"

*THE ILLUSTRATION PROVIDED MAY VARY FROM THE PRODUCT PURCHASED. THIS DOCUMENT IS TO BE USED AS A REFERENCE, ACCESSORIES SUCH AS HEADBOARD BRACKETS AND ADDITIONAL LEGS MAY BE REQUESTED AT ADDITIONAL CHARGE.