





## CONTENTS

Advisory.....	4
Acoustics.....	6
Assembly .....	7
Remote Control Function .....	12
Remote Control Programming .....	13
Troubleshooting.....	17
1-3-25 Warranty .....	18



If adjustable base does not operate or if parts are missing, call:

(800) 888-3078

Do not contact retail store or dealer.

### IMPORTANT INFORMATION

#### READ THE FOLLOWING INFORMATION CAREFULLY BEFORE USING THIS PRODUCT

##### READ ALL INSTRUCTIONS BEFORE USING



**FOR OPTIMUM ADJUSTABLE BASE OPERATION, USE A GROUNDED, ELECTRICAL SURGE PROTECTION DEVICE (NOT INCLUDED). FAILURE TO USE A SURGE PROTECTION DEVICE COULD COMPROMISE SAFETY OR CAUSE PRODUCT MALFUNCTION.**

##### ELECTRICAL RATING

Electrical components are rated for 120VAC, 60Hz, 1.2A.

##### ELECTRICAL GROUNDING

This product is equipped with a polarized or grounded electrical power cord. The power cord will only fit into a grounded, electrical surge protection device (not included) or a grounded electrical outlet.

##### WARRANTY WARNING

Do not open any control boxes, motors or remote control devices. The product warranty will be void if these components are tampered with. Do not attempt to alter component wiring or adjust or modify the structure of the product in any way or the warranty will be void. Any repair or replacement of base parts must be performed by authorized personnel.

##### LUBRICATION

This product is designed to be maintenance free. The lift motors are permanently lubricated and sealed—no additional lubrication is required. Do not apply lubricant to lift motor lead screws or any nylon nuts or the base may inadvertently creep downward from the elevated position.

##### PRODUCT RATINGS

The base lift motors are *not* designed for continuous use. Reliable operation and full life expectancy will be realized as long as the lift motor operation does not exceed two (2) minutes over a twenty (20) minute period, or approximately 10% duty cycle. Any attempt to circumvent or exceed product ratings will shorten the life expectancy of the product and may void the warranty.

The recommended maximum weight (including mattress) is 800 lb (363 kg) distributed evenly across the base. This product is not designed to support or lift this amount in the head or foot sections alone. ***Note: Exceeding the recommended weight restrictions could damage the base and void the warranty.***

For best performance, consumers should enter and exit the adjustable base with the base in the flat (horizontal) position. Avoid placing entire weight on head or foot section of the base, including when in the raised position. **DO NOT STAND ON BASE AT ANY TIME.**

UL (Underwriters Laboratories) recognized components.

CFR 1633 approved for use with most mattresses.

Assembled in USA.

## ADVISORY

### IMPORTANT INFORMATION

#### READ THE FOLLOWING INFORMATION CAREFULLY BEFORE USING THIS PRODUCT

##### **SMALL CHILDREN / PETS WARNING**

After the base is unboxed, immediately dispose of packaging material as it can smother small children and pets. To avoid injury, children or pets should not be allowed to play under or on the base. Children should not operate this base without adult supervision.

##### **HOSPITAL USE DISCLAIMER**

***This base is designed for in-home use only.*** It is not approved for hospital use and does not comply with hospital standards. Do not use this base with tent type oxygen therapy equipment, or use near explosive gases.

##### **SERVICE REQUIREMENTS**

Service technicians are not responsible for moving furniture, removing headboards and footboards or any items required to perform maintenance on the base. In the event the technician is unable to perform service due to lack of accessibility, the service call will be billed to the purchaser and the service will have to be rescheduled.

##### **PACEMAKER WARNING**

This product produces a slight humming sensation. It is possible that individuals with heart-assist pacemakers may experience a sensation similar to exercise. Consult physician for complete information.

##### **FCC COMPLIANCE**

The equipment has been tested and found to comply with the limits for a Class B digital device, pursuant to Part 15 of the FCC Rules. These limits are designed to provide reasonable protection against harmful interference when the equipment is operated in a residential environment. This equipment generates, uses, and can radiate radio frequency energy and, if not installed and used in accordance with the instruction manual, may cause harmful interference to radio communications. However, there is no guarantee that interference will not occur in a particular installation. If this equipment does cause harmful interference to radio or television reception, which can be determined by turning the equipment off and on, the user is encouraged to try to correct the interference by one or more of the following measures:

- Reorient or relocate the receiving antenna.
- Increase the separation between the equipment and receiver.
- Connect the equipment into an outlet on a circuit different from that to which the receiver is connected.
- Consult the dealer or an experienced radio/TV technician for help.

This device complies with Part 15 of the FCC rules. Operation is subject to the following conditions: (1) This device may not cause harmful interference, and (2) this device must accept any interference received, including interference that may cause undesired operation.

**FCC Caution:** Any changes or modifications not expressly approved by the party responsible for compliance could void the user's authority to operate this equipment.

Radio Frequency = 433MHz.

## ACOUSTICS

### LIFTING/LOWERING MECHANISMS

The lift/lower feature will emit a minimal humming sound during operation. This is normal.

During operation, the lift arm wheels make contact with the platform support of the base. This applies slight tension on the moving components and resonance is reduced to a minimum level. If excessive noise or vibration is experienced, reverse the movement action (up or down) of the base with the remote control. This should realign the base's activating mechanisms to the proper operational position.

### LOCATION ENVIRONMENT

The level of sound experienced during operation is directly related to the location environment. For example, when a base is located on a hardwood floor with the massage feature in operation, a vibrating tone will be audible. To minimize this resonance, place a piece of carpet, or rubber caster cups, under each leg or caster of the base.

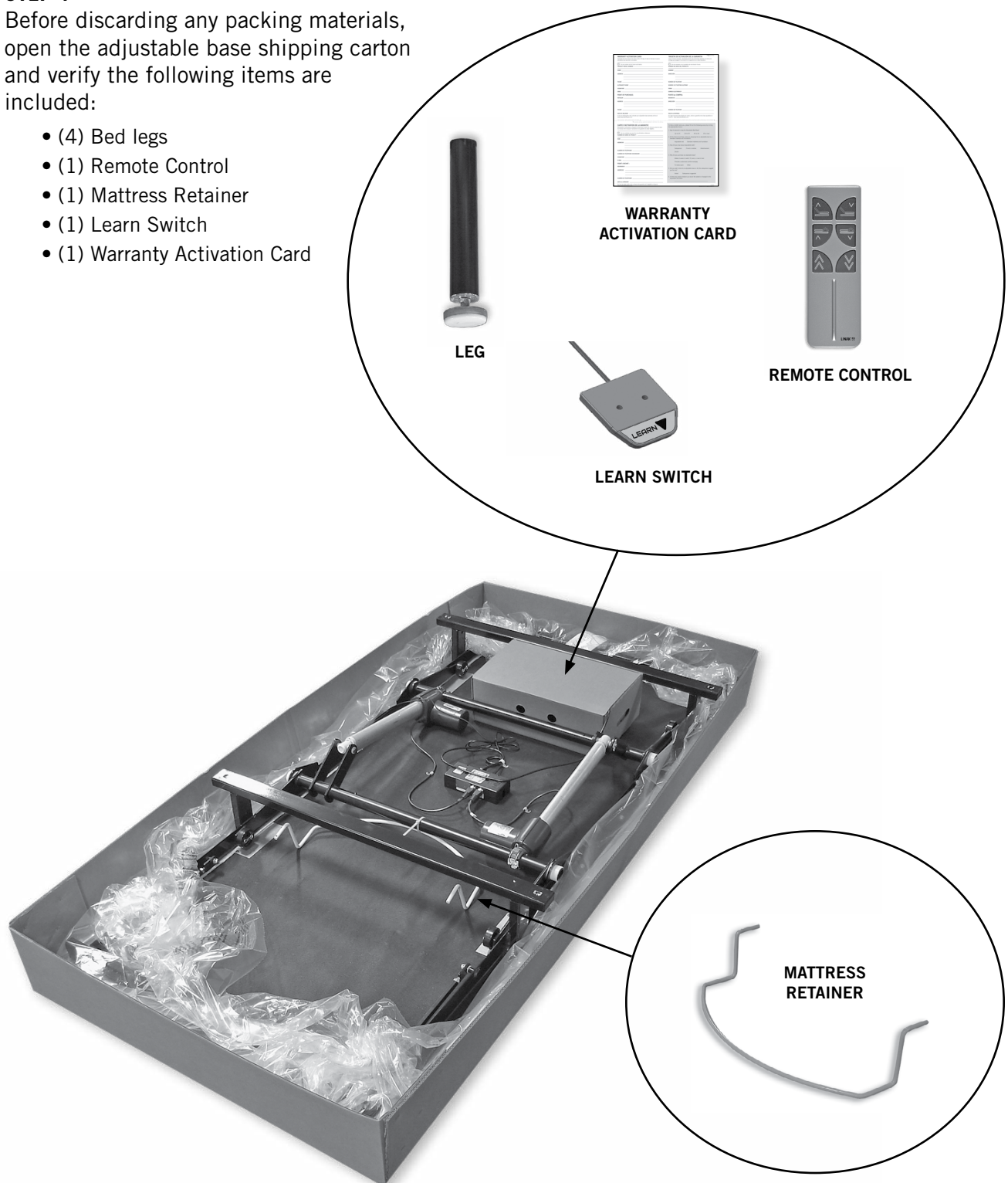
## ASSEMBLY

For setup of the adjustable base, complete the following procedures, in the order indicated below and on the following pages.

### STEP 1

Before discarding any packing materials, open the adjustable base shipping carton and verify the following items are included:

- (4) Bed legs
- (1) Remote Control
- (1) Mattress Retainer
- (1) Learn Switch
- (1) Warranty Activation Card



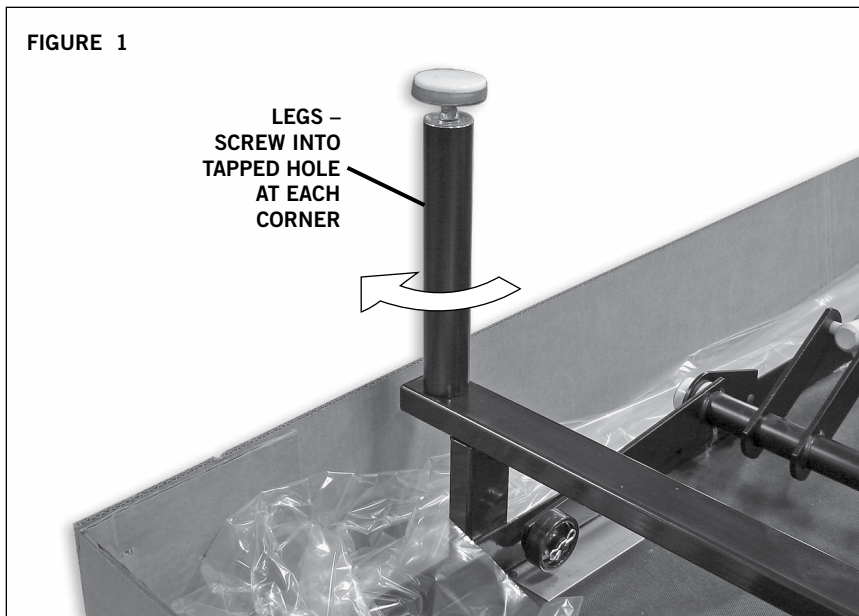
## ASSEMBLY

### STEP 2

Take the learn switch out of the hardware box and place in corner of base. Uncoil the main power cord and extend out head end of base, then remove the hardware box from shipping container. Cut zip-tie and remove mattress retainer.

### STEP 3

Install (4) legs into the base frame. Simply screw each leg into a tapped hole at each corner of the base frame (**FIGURE 1**).



### STEP 4

Carefully lift the adjustable base frame from the shipping carton, keeping the unit top-side-down.

### STEP 5

Remove the plastic packaging from the adjustable base frame. Carefully rotate the base frame over so it is resting on its legs.

#### READ ALL INSTRUCTIONS BEFORE USING

#### **WARNING**

**DUE TO RISK OF INJURY, TWO  
PEOPLE ARE REQUIRED TO HANDLE  
AND MOVE ADJUSTABLE BASE.**

#### **WARNING**

**POWER CORDS MUST NOT  
INTERFERE WITH ANY ADJUSTABLE  
BASE MECHANISMS.**



## ASSEMBLY

### STEP 6

Plug electrical power cord into a working, grounded electrical outlet.

**Note:** *An electrical surge protection device is recommended (not included).*

### STEP 7

Briefly activate all functions of the base with the remote control to verify all features are in working order. If base does not operate, refer to the *Troubleshooting* section of this manual.

### STEP 8

Return base to the level position.

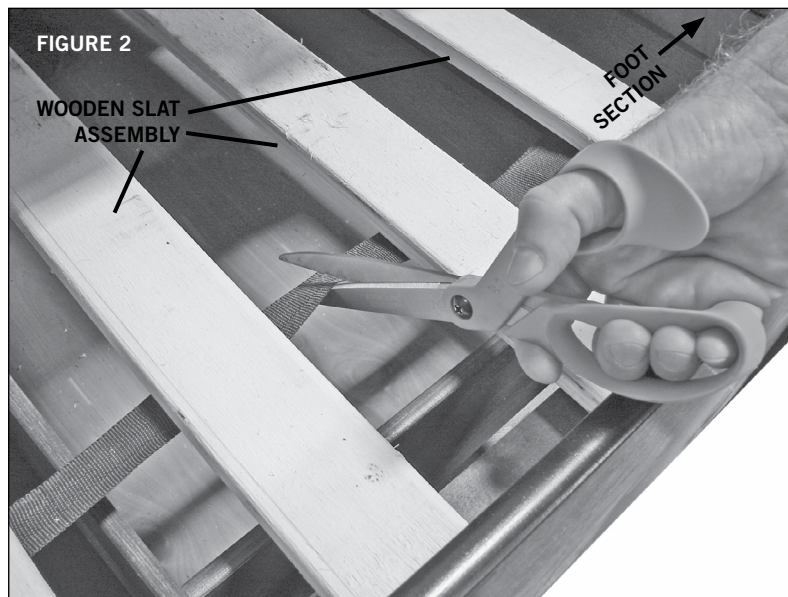
### CASE GOOD INSTALLATION

The use of wooden slats is required for adjustable base installation on this product.

### STEP 9

Prepare slat arrangement:

- Measure to determine the number of wooden slats needed to cover foot storage drawers (minimum of 2 required).
- Using scissors or utility knife, cut webbing to separate needed slat section from wooden slat assembly (**FIGURE 2**).
- Place slat section on case good over foot storage drawers.



### READ ALL INSTRUCTIONS BEFORE USING

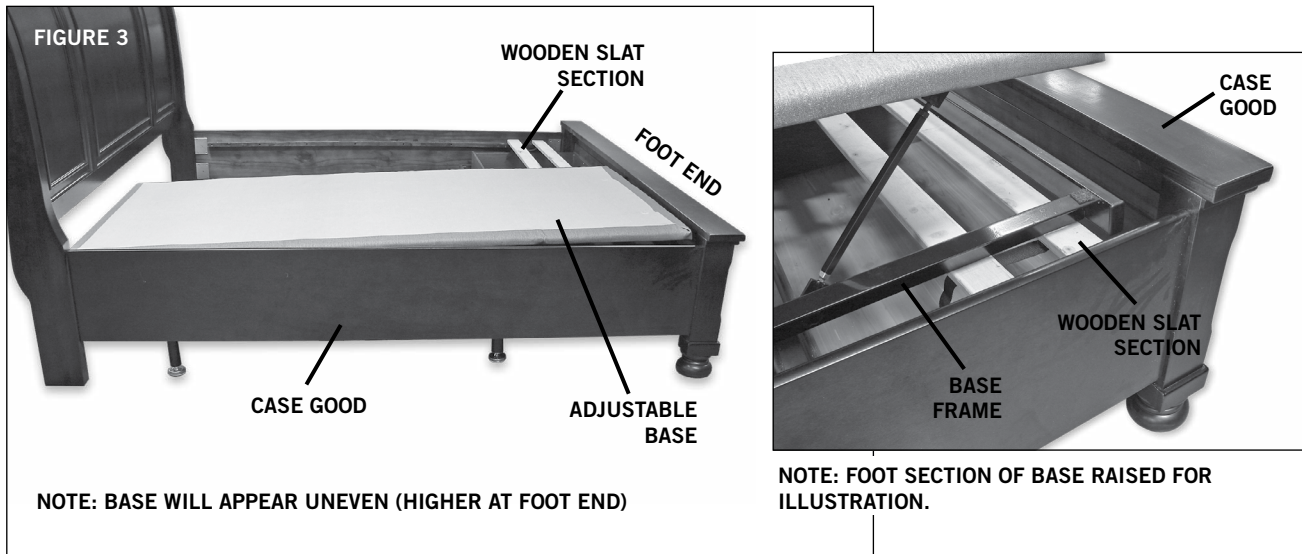
#### **CAUTION**

**EXERCISE CAUTION WHEN USING  
A SHARP INSTRUMENT, AS INJURY  
COULD OCCUR.**

## ASSEMBLY

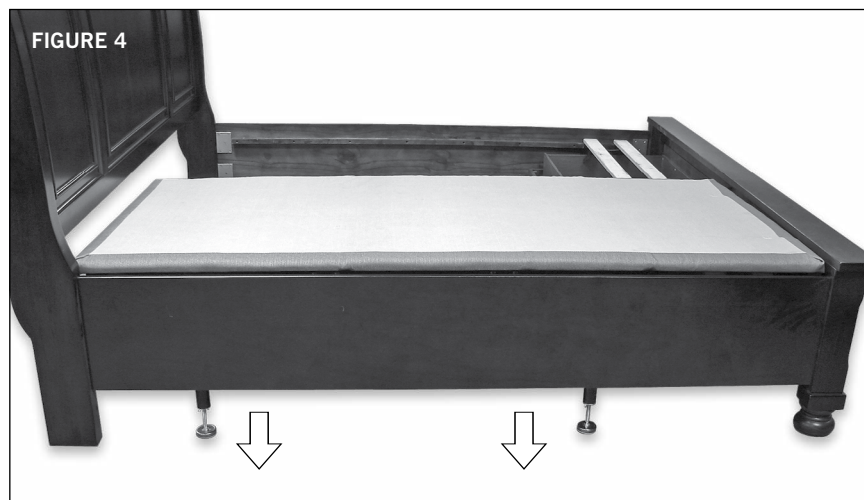
### STEP 10

Carefully, place adjustable base into case good. Foot end of base frame is positioned over wooden slat section (**FIGURE 3**).



### STEP 11

Adjust (extend) glides on legs until weight of adjustable base is resting gently on wooden slat section and legs and base is level (**FIGURE 4**).



### STEP 12

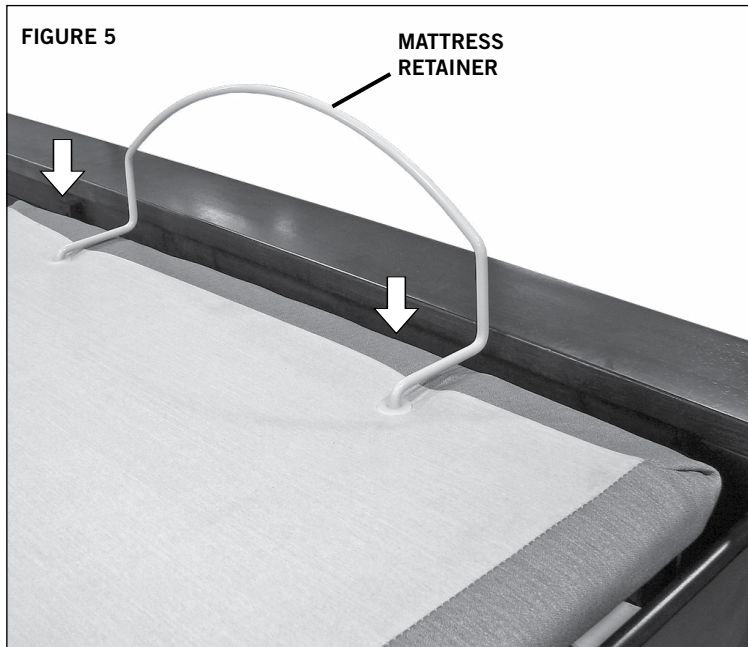
Repeat Steps 10 and 11 for King base setup. Case good installation complete for Twin and Queen bases. **Note: King base installation shown.**

## ASSEMBLY

### STEP 13

Install mattress retainer at the foot end of the adjustable base as follows:

- a. Locate grommets at foot end of base.
- b. Place mattress retainer ends into grommets in top surface of adjustable base (**FIGURE 5**). Press down until horizontal retainer section is flush against base.

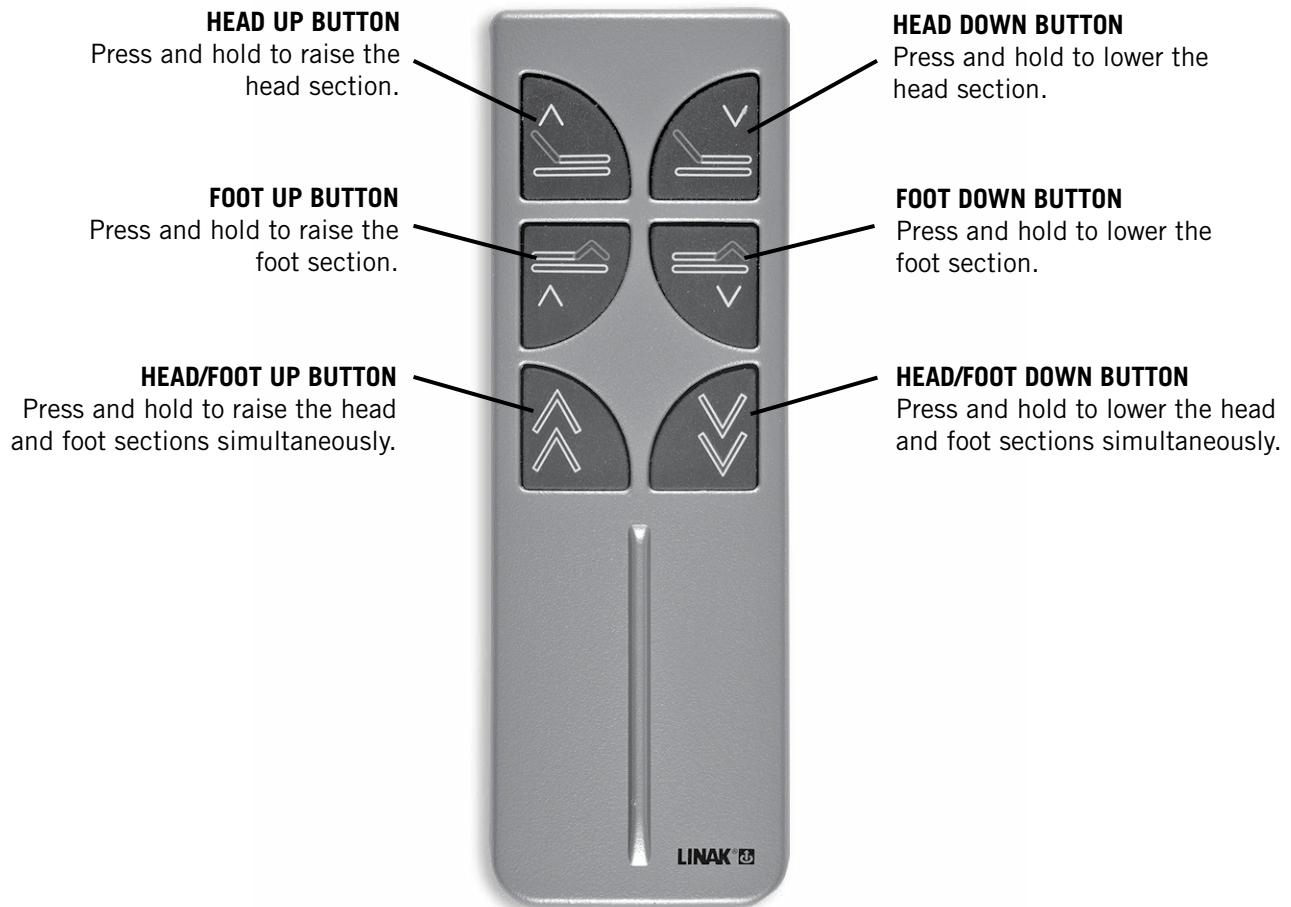


### STEP 14

Install mattress on adjustable base.

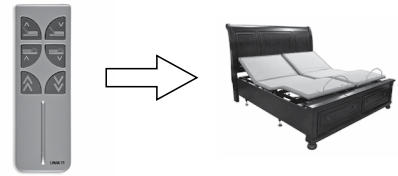
Typical adjustable base installation is now complete.

## REMOTE CONTROL FUNCTION



## REMOTE CONTROL PROGRAMMING (1 remote control - 1 base)

**Program One Remote to Operate One Base** - Bases are factory programmed to operate as one remote control to one base. If reprogramming is required, perform the following numbered procedure. *If programming fails, initiate the programming procedure a second time.*

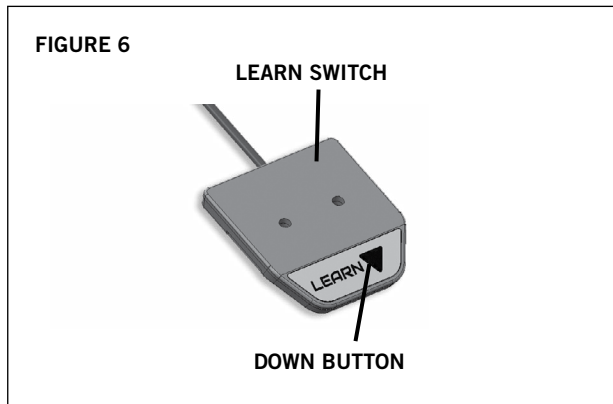


### STEP 1

Plug the base into the electrical power source.

### STEP 2

Locate the learn switch (**FIGURE 6**).



### STEP 3

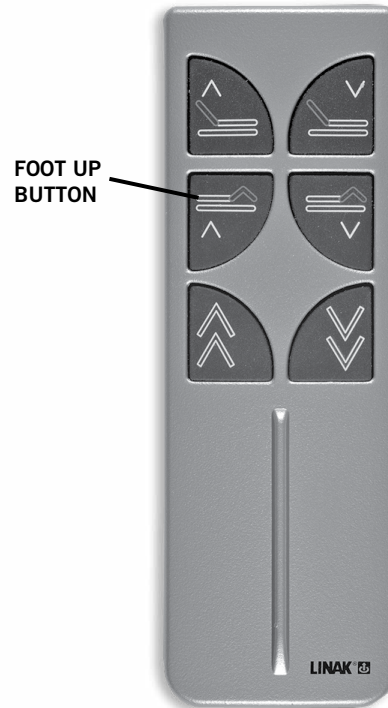
Press and hold the *down button* on the learn switch (**FIGURE 6**).

### STEP 4

While holding in the *down button*, press and hold the *foot up button* on the remote control (**FIGURE 7**) for 5 seconds, then release both the *down button* and the *foot up button*.

### STEP 5

Press either the *head* or *foot* button on the remote control to verify base functions.



**FIGURE 7**



## REMOTE CONTROL PROGRAMMING (1 remote control - 2 bases)

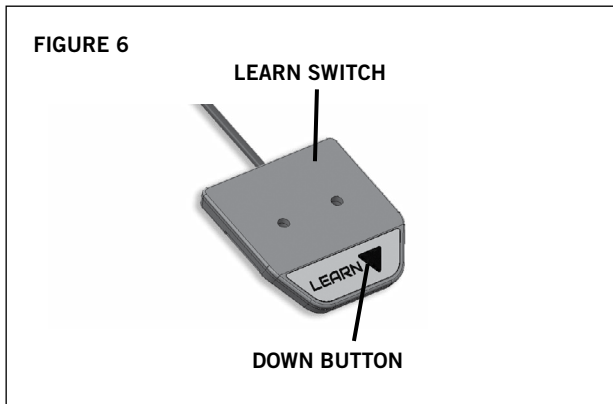
**Program One Remote to Operate Two Bases** - Bases are factory programmed to operate individual bases. To synchronize bases, perform the following numbered procedure. *If programming fails, initiate the programming procedure a second time.*

### STEP 1

Plug base 1 into the electrical power source.

### STEP 2

Locate the learn switch for base 1 (**FIGURE 6**).



### STEP 3

Press and hold the *down button* on the learn switch (**FIGURE 6**).

### STEP 4

While holding in the *down button*, press and hold the *foot up button* on the remote control (**FIGURE 7**) for 3 seconds, then release both the *down button* and the *foot up button*.

### STEP 5

Press either the *head* or *foot button* on the remote control to verify base functions.

### STEP 6

Repeat procedure with base 2.

One remote control should now operate both bases.

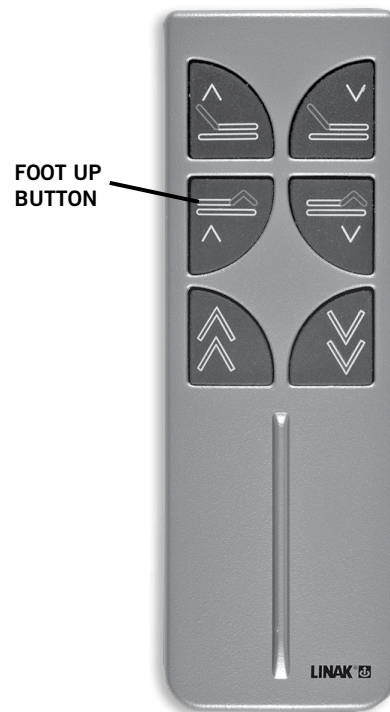
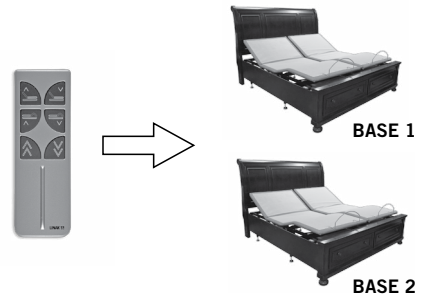
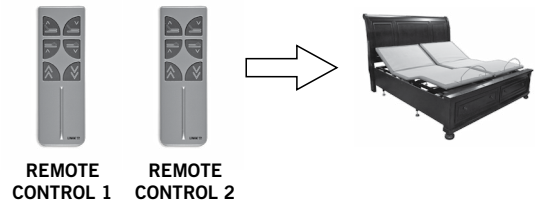


FIGURE 7

## REMOTE CONTROL PROGRAMMING (2 remote controls - 1 base)

**Program Two Remotes to Operate One Base** - Bases are factory programmed to operate individual bases. To program both remotes to operate one base, perform the following numbered procedure. *If programming fails, initiate the programming procedure a second time.* **NOTE: More than one person may be required for programming.**



### STEP 1

Plug the base into the electrical power source.

### STEP 2

Locate the learn switch (**FIGURE 6**) and both remote controls (**FIGURE 7**), and position them close together.

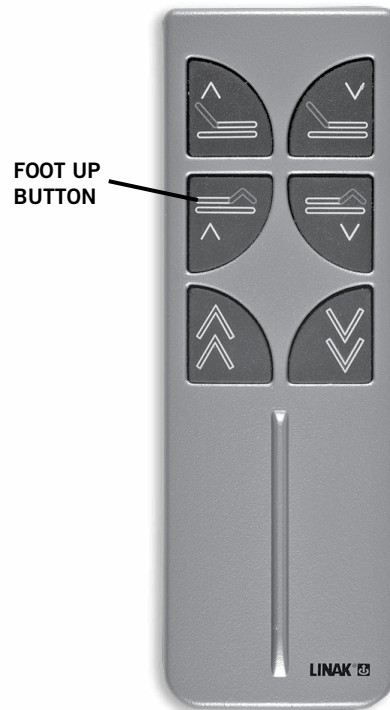
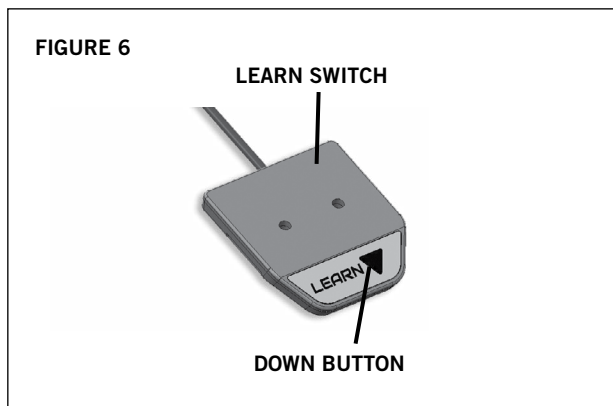


FIGURE 7

### STEP 3

Press and hold the *down button* on the learn switch AND the *foot up button* on remote control 1 (**FIGURES 6 and 7**).

After 3 seconds, release the *foot up button* on remote control 1. While continuing to hold the *down button* on the learn switch, press and hold the *foot up button* on remote control 2 for 3 seconds.

Release the *down button* on the learn switch and the *foot up button* on remote control 2.

### STEP 4

Press either the *head* or *foot button* on each remote control to verify base functions.

Both remote controls should now operate one base.

## REMOTE CONTROL PROGRAMMING (2 remote controls - 2 bases)

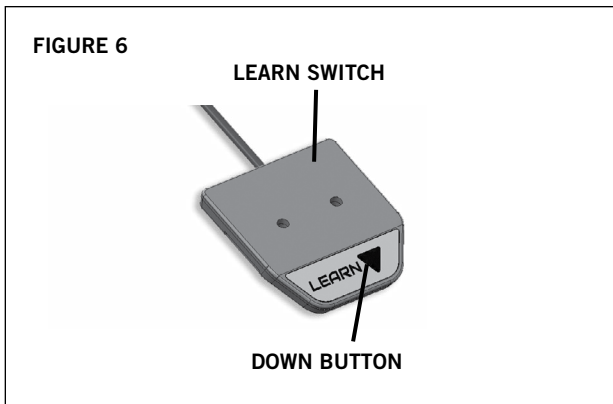
**Program Two Remotes to Operate Two Bases** - Bases are factory programmed to operate individual bases. To program two remotes to operate two bases, perform the following numbered procedure. *If programming fails, initiate the programming procedure a second time.* **NOTE: More than one person may be required for programming.**

### STEP 1

Position both bases side-by-side and plug them into an electrical power source.

### STEP 2

Locate and position the learn switch (**FIGURE 6**) for both bases close together. Position both remote controls (**FIGURE 7**) near both learn switches.



### STEP 3

Simultaneously press and hold the *down button* on the learn switch for base 1 AND the *foot up button* on remote control 1 for 3 seconds (**FIGURES 6 and 7**).

After 3 seconds, release the *foot up button* on remote control 1. While continuing to hold the *down button* on the learn switch for base 1, press and hold the *foot up button* on remote control 2 for 3 seconds.

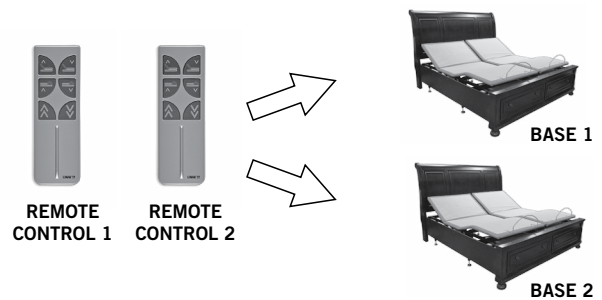
Release the *down buttons* on the learn switch and the *foot up button* on remote control 2.

### STEP 4

Repeat Step 3 for base 2.

### STEP 5

Press either the *head* or *foot* button on each remote control to verify base functions.



### READ ALL INSTRUCTIONS BEFORE USING



**AT LEAST TWO PEOPLE ARE RECOMMENDED FOR HANDLING AND MOVING ADJUSTABLE BASE AFTER IT IS ASSEMBLED.**

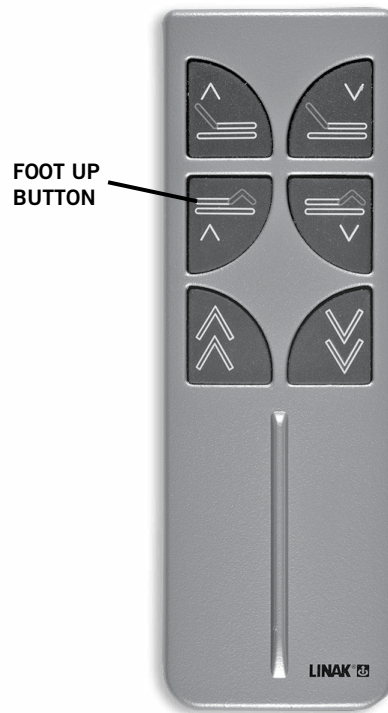


FIGURE 7

**TO SEPARATE BASES (ONE REMOTE CONTROL OPERATING ONE BASE), SEE 1 REMOTE CONTROL-1 BASE PROGRAMMING.**



## TROUBLESHOOTING

In the event the adjustable base fails to operate, investigate the symptoms and possible solutions provided in the chart below:

SYMPTOM	SOLUTION
No features of the base will activate.	<ul style="list-style-type: none"> <li>• Program the remote control (see <i>Remote Control Programming</i> section of this manual for programming procedures).</li> <li>• Unplug power cord, wait 30 seconds and plug in to reset electronic components.</li> <li>• Electrical circuit breaker may be tripped. Check electrical service breaker box to verify.</li> <li>• Defective surge protection device or electrical outlet. Test outlet by plugging in another working appliance.</li> <li>• If the base was operated over the rated duty cycle, thermal switch opens. Wait 30 minutes before trying to operate the base. Once the base resumes normal operation, do not exceed the duty cycle.</li> </ul>
Head or foot section will elevate, but will not return to the horizontal (flat) position.	<ul style="list-style-type: none"> <li>• Base mechanism may be obstructed. Elevate base and check for obstruction. Remove obstruction.</li> <li>• Head section may be too close to the wall.</li> </ul>
Excessive motor noise.	<ul style="list-style-type: none"> <li>• If base is located on hard surface flooring, place carpet pieces or rubber caster cups under each leg or caster of the base.</li> <li>• Elevate the head or foot section a short distance (with the remote control) to realign the lift/lower mechanisms with the base support platform.</li> <li>• Verify that base is not positioned against a wall, nightstand, or other object that may cause vibration or noise.</li> <li>• If base is installed over a base frame, verify motors are not causing base frame (or base frame components) to vibrate.</li> </ul>

## 1 YEAR, 3 YEAR AND 25 YEAR LIMITED WARRANTY

In this warranty: “**Adjustable base**” means the adjustable bed foundation sold by L&P to the dealer. The “adjustable base” does not include the mattress. “**L&P**” means Leggett & Platt, Incorporated. “**Purchaser**” and “**You**” both mean the consumer who is the original purchaser of this adjustable base made by L&P. This warranty is not transferrable. “**Warranty Commencement Date**” means either (i) the date You purchased a new and unused L&P adjustable base or (ii) the date of manufacture of this adjustable base if You purchased an L&P adjustable base that has been used as floor or display model. L&P warrants this adjustable base to You on the terms and over the reducing periods of time set out below. All warranty claims require notice from You to be given to L&P in the manner set out below, and to be received by L&P inside the applicable warranty time period.

### 1ST YEAR FULL WARRANTY

For the first year from the Warranty Commencement Date, your adjustable base is warranted against non-excluded defects in L&P's workmanship or materials. During the first year from the Warranty Commencement Date, L&P will repair or replace (at no cost to You) any defective adjustable base part, and L&P will pay all authorized labor and transportation costs associated with the repair or replacement of any parts found to be defective.

### 2ND & 3RD YEAR LIMITED WARRANTY

During the second and third year from the Warranty Commencement Date, L&P will replace any adjustable base part found to be defective and not excluded by this warranty. You are responsible to pay all service and transportation costs related to the costs of receiving and installation of the new part.

### 4TH YEAR TO END OF 25TH YEAR LIMITED WARRANTY

Starting in the fourth year from the Warranty Commencement Date and through to the end of the 25th year from the Warranty Commencement Date, L&P will replace steel and mechanical base parts found to be defective and not excluded by this warranty. **This warranty does not cover any electronics, electrical components, drive motors or massage motors.** You are responsible to pay all service and transportation costs related to receiving and installation of the new part and a portion of the cost of the replacement steel and mechanical part, based on the number of months that the base has been owned by you since the fourth anniversary of the Warranty Commencement Date. By the end of the 25th year, no portion of the replacement cost is covered by L&P. You will be required to pay 1/22nd of the then current replacement cost of the part multiplied by the number of years past the third year from the Warranty Commencement Date. This portion is calculated using the following formula: Cost of the part divided by 22 [being the number of years in years 4 to 25 inclusive], multiplied by the number of years you have owned the base since the end of the first 3 years. For example, if you make a claim for a part eligible for this warranty in the 5th year since the Warranty Commencement Date, you would be responsible for paying: \$100 part cost divided by 22, multiplied by 2 = \$9.09.

### ADDITIONAL TERMS AND CONDITIONS

This warranty requires notice to be given to L&P of any claim for repairs or replacement parts.

### EXCLUSIONS:

This warranty does not apply; (a) to any damage caused by You; (b) if there has been any repair or replacement of adjustable base parts by an unauthorized person; (c) if the adjustable base has been mishandled (whether in transit or by other means), subjected to physical or electrical abuse or misuse, or otherwise operated in any manner inconsistent with the operation and maintenance procedures outlined in the Owner's Manual and this warranty; (d) to damage to mattresses, fabric, cables, electrical cords or items supplied by dealers (contact the dealer for warranty information on these items); (e) if there has been any modification of the adjustable base **without prior written consent by L&P**; or (f) to costs for unnecessary service calls, including costs for in-home service calls solely for the purpose of educating You about the adjustable base or finding a satisfactory power connection.

This warranty will be void if either the recommended weight restriction is not followed (refer to the advisory section of the Owner's Manual) or if You sell or give or transfer the base to another person.

Any repairs to or replacement to Your adjustable base or its components under the terms of this limited warranty does not extend the applicable warranty from the Warranty Commencement Date. This time limitation may not apply in some jurisdictions, including the Province of Quebec.

The decision to repair or to replace defective parts under this warranty shall be made, or cause to be made, by L&P at its option and in its sole discretion.

*Continued on next page...*

## 1 YEAR, 3 YEAR AND 25 YEAR LIMITED WARRANTY

**Repair or replacement shall be the sole remedy of the Purchaser. There shall be no liability on the part of L&P for any special, indirect, incidental, or consequential damages or for any other damage, claim, or loss not expressly covered by the terms of this warranty.**

This limited warranty does not include reimbursement for inconvenience, removal, installation, setup time, loss of use, shipping, or any other costs or expenses. L&P and its service technicians will not be responsible for moving furniture or any other items not attached to the adjustable base in order to perform service on the adjustable base.

It is the sole responsibility of You to provide adequate space and accessibility to the adjustable base. In the event that the technician is unable to perform service due to lack of accessibility, the service call will be billed to You and the service will have to be rescheduled.

**L&P makes no other warranty whatever, express or implied, and all implied warranties of merchantability and fitness for a particular purpose are disclaimed by L&P and excluded from this agreement.**

Some American States do not allow the exclusion or limitation of incidental or consequential damages, so the above limitation or exclusion may not apply to You.

This warranty gives You specific legal rights, and You may also have other rights, which may vary from jurisdiction to jurisdiction. This warranty is valid in all 50 American States, the District of Columbia, Puerto Rico, and all 10 Provinces and 3 Territories of Canada.

For customer service under this limited warranty, give notice to L&P by mail, phone, email or online to the addresses set out below:

Leggett & Platt, Incorporated  
PO Box 668  
Lexington, North Carolina 27293

toll free phone: 1.800.888.3078  
online: [lpadjustablebases.com](http://lpadjustablebases.com)

**PLEASE DO NOT CONTACT YOUR RETAIL DEALER  
OR ANY OTHER SERVICE PERSONNEL**

**NATIONWIDE CUSTOMER SERVICE toll free: (800) 888-3078**

© 2017 Leggett & Platt Adjustable Bed Group, a division of Leggett & Platt Incorporated

